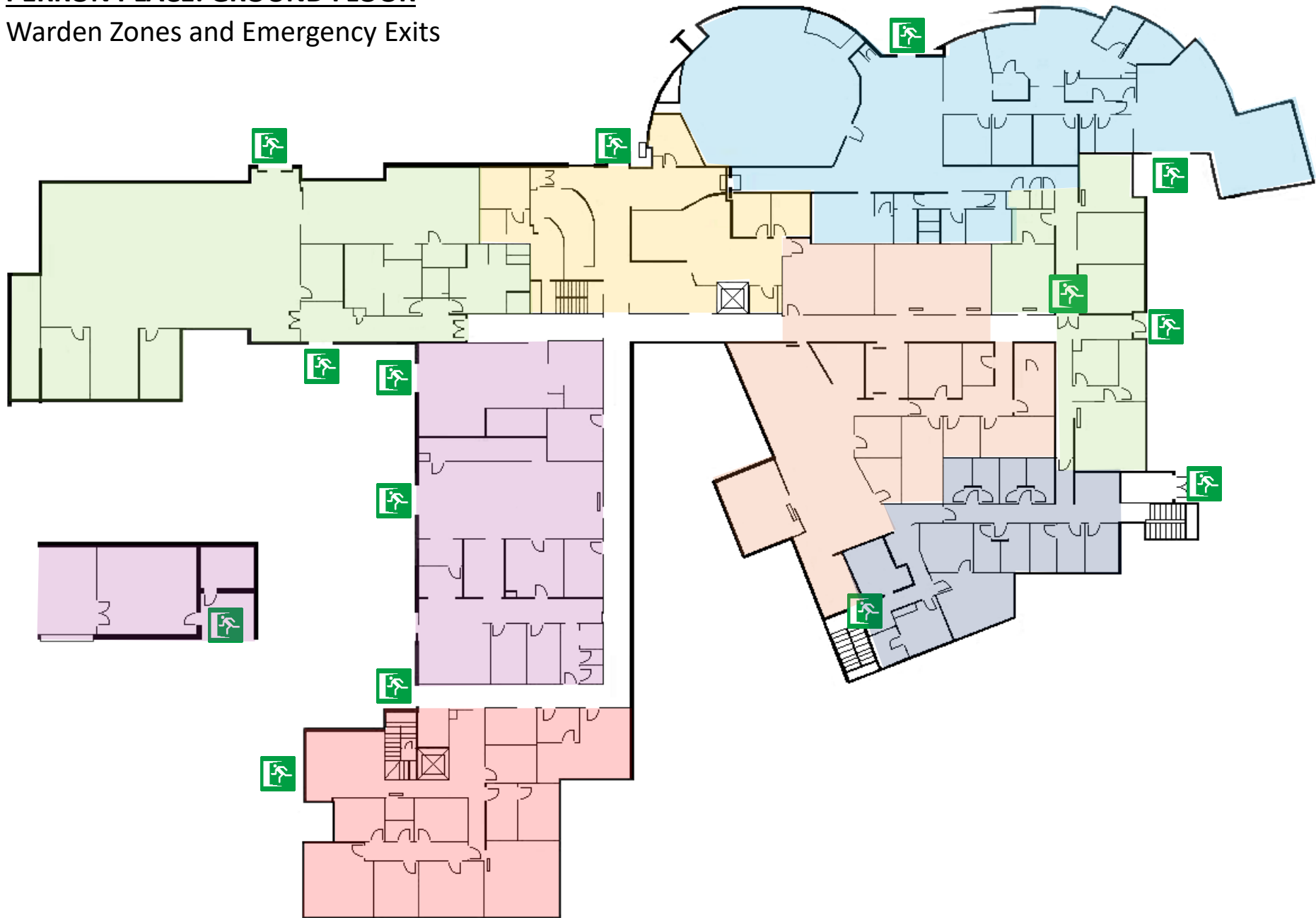


# **PERRON PLACE: GROUND FLOOR**

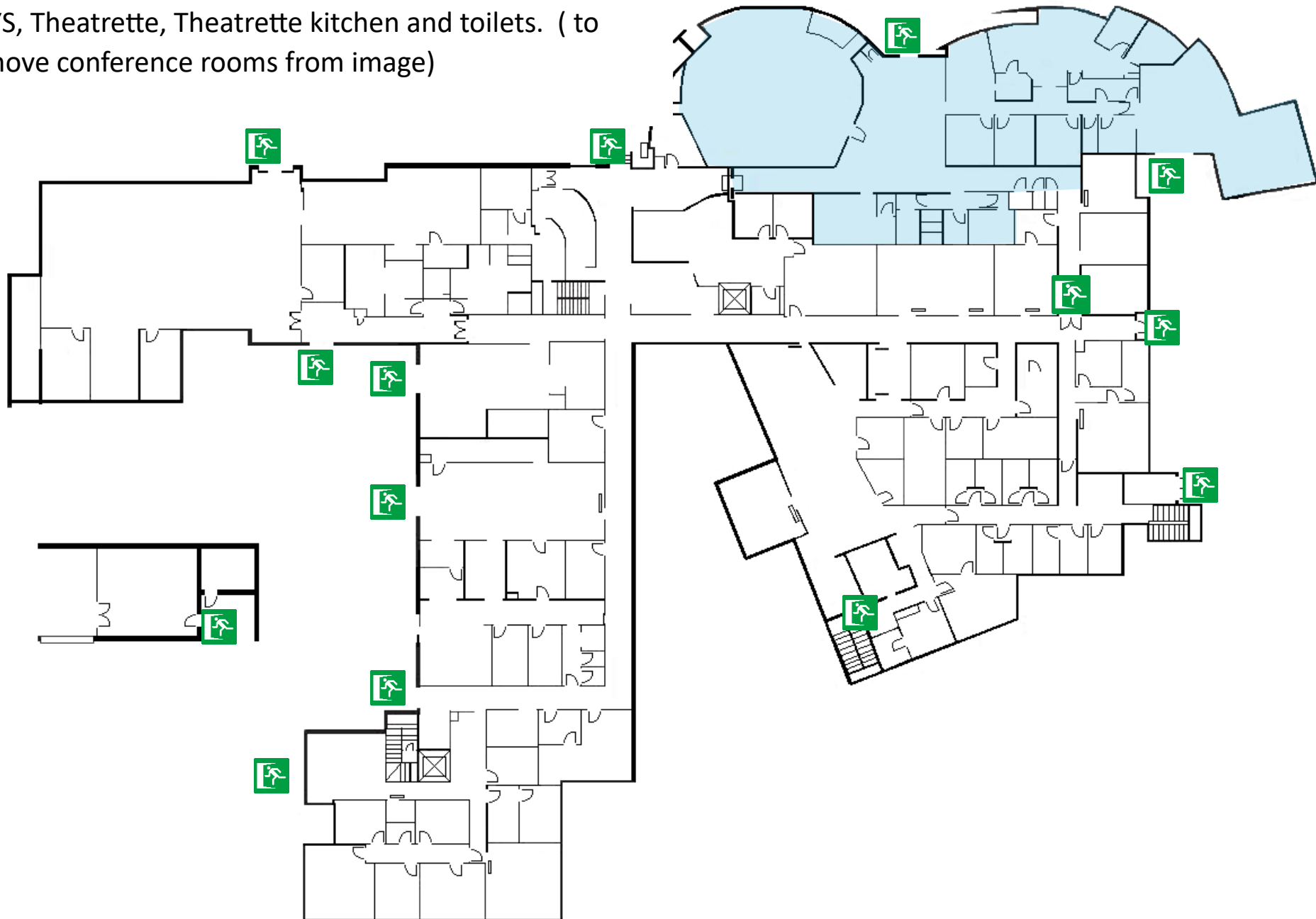
Warden Zones and Emergency Exits



## PERRON PLACE: GROUND FLOOR

### Warden Zone and Emergency Exits

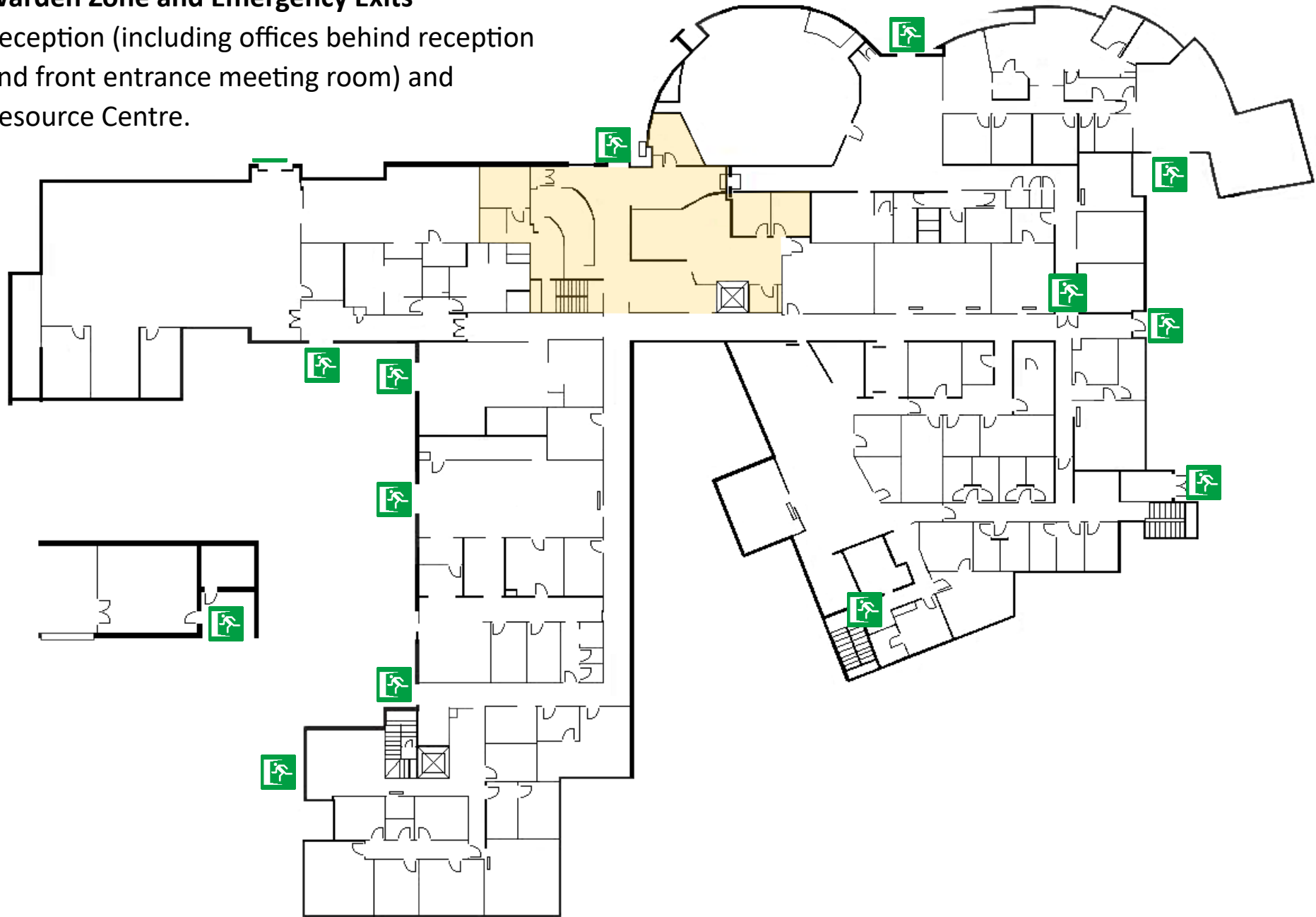
CAYS, Theatrette, Theatrette kitchen and toilets. ( to remove conference rooms from image)



## PERRON PLACE: GROUND FLOOR

### **Warden Zone and Emergency Exits**

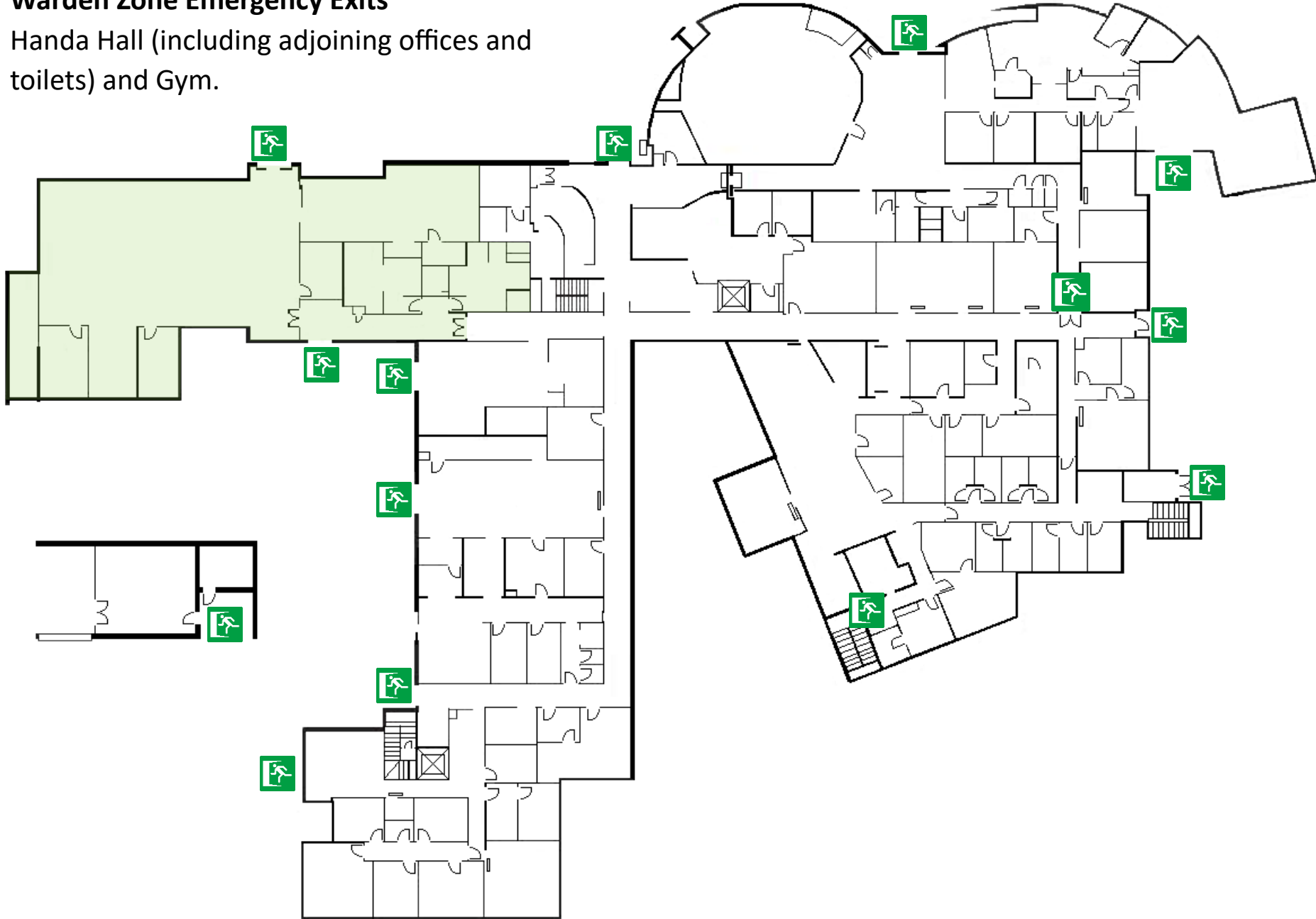
Reception (including offices behind reception and front entrance meeting room) and Resource Centre.



## **PERRON PLACE: GROUND FLOOR**

### **Warden Zone Emergency Exits**

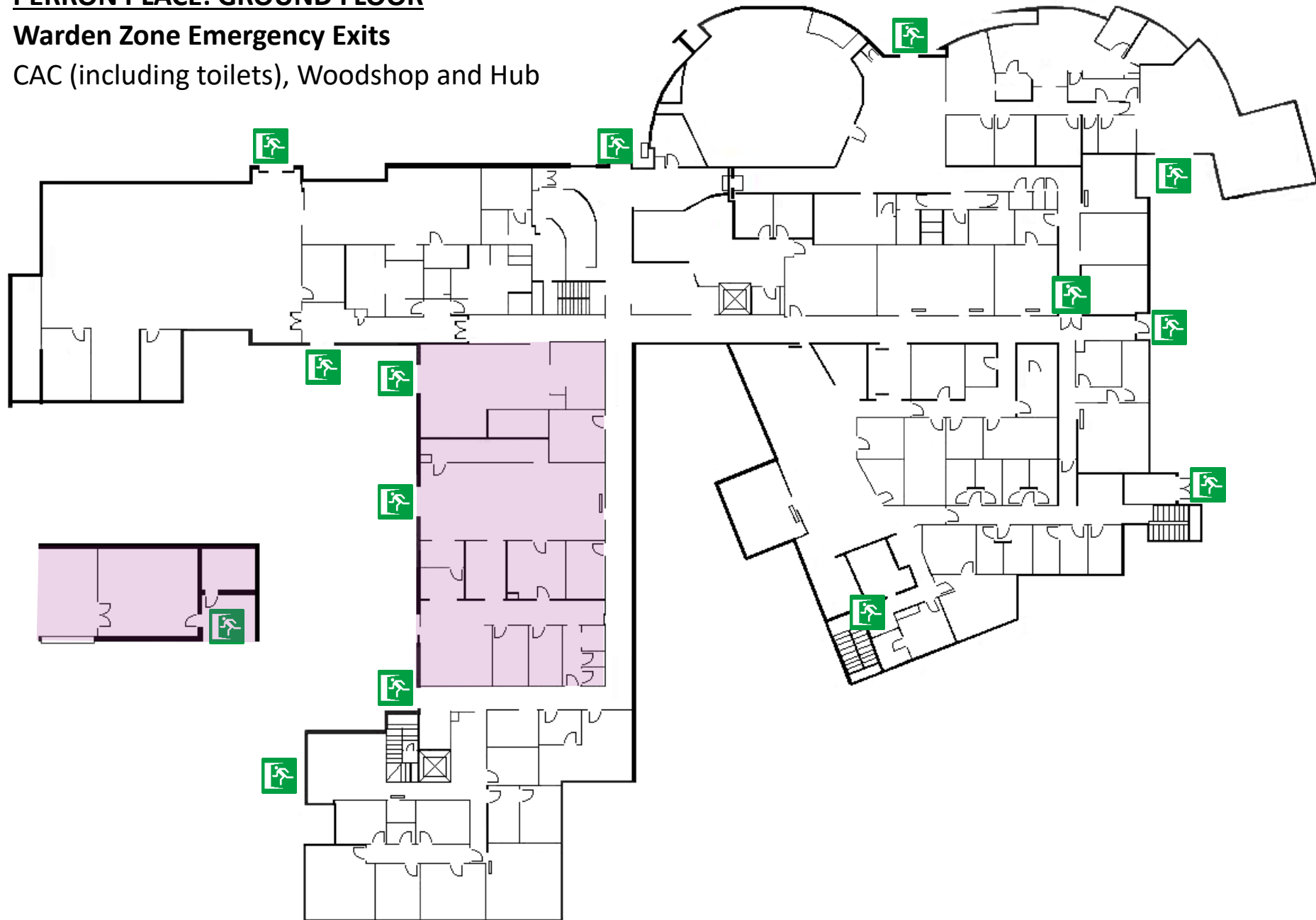
Handa Hall (including adjoining offices and toilets) and Gym.



**PERRON PLACE: GROUND FLOOR**

**Warden Zone Emergency Exits**

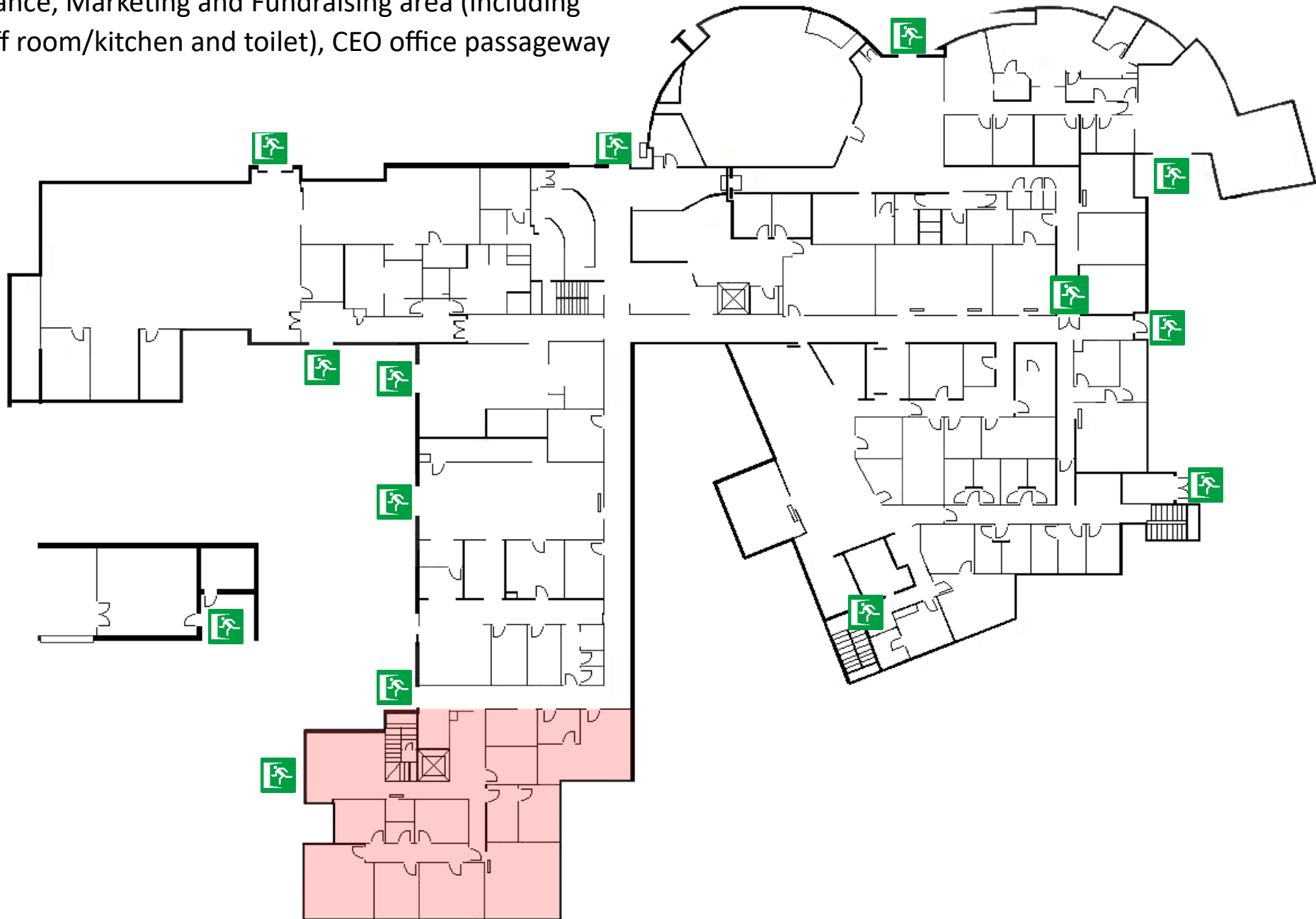
CAC (including toilets), Woodshop and Hub



## PERRON PLACE: GROUND FLOOR

### Warden Zone Emergency Exits

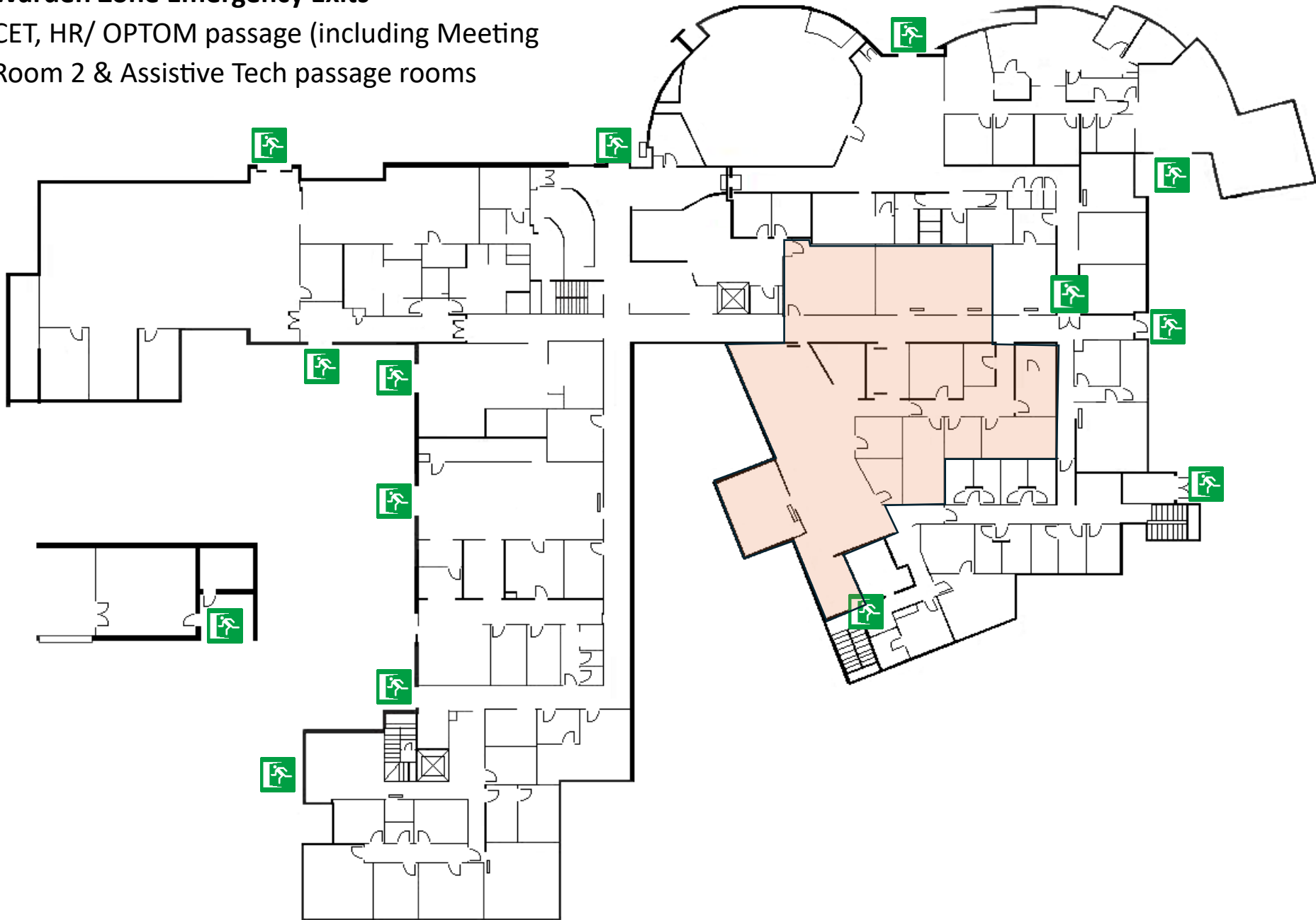
Finance, Marketing and Fundraising area (including staff room/kitchen and toilet), CEO office passageway



## PERRON PLACE: GROUND FLOOR

### Warden Zone Emergency Exits

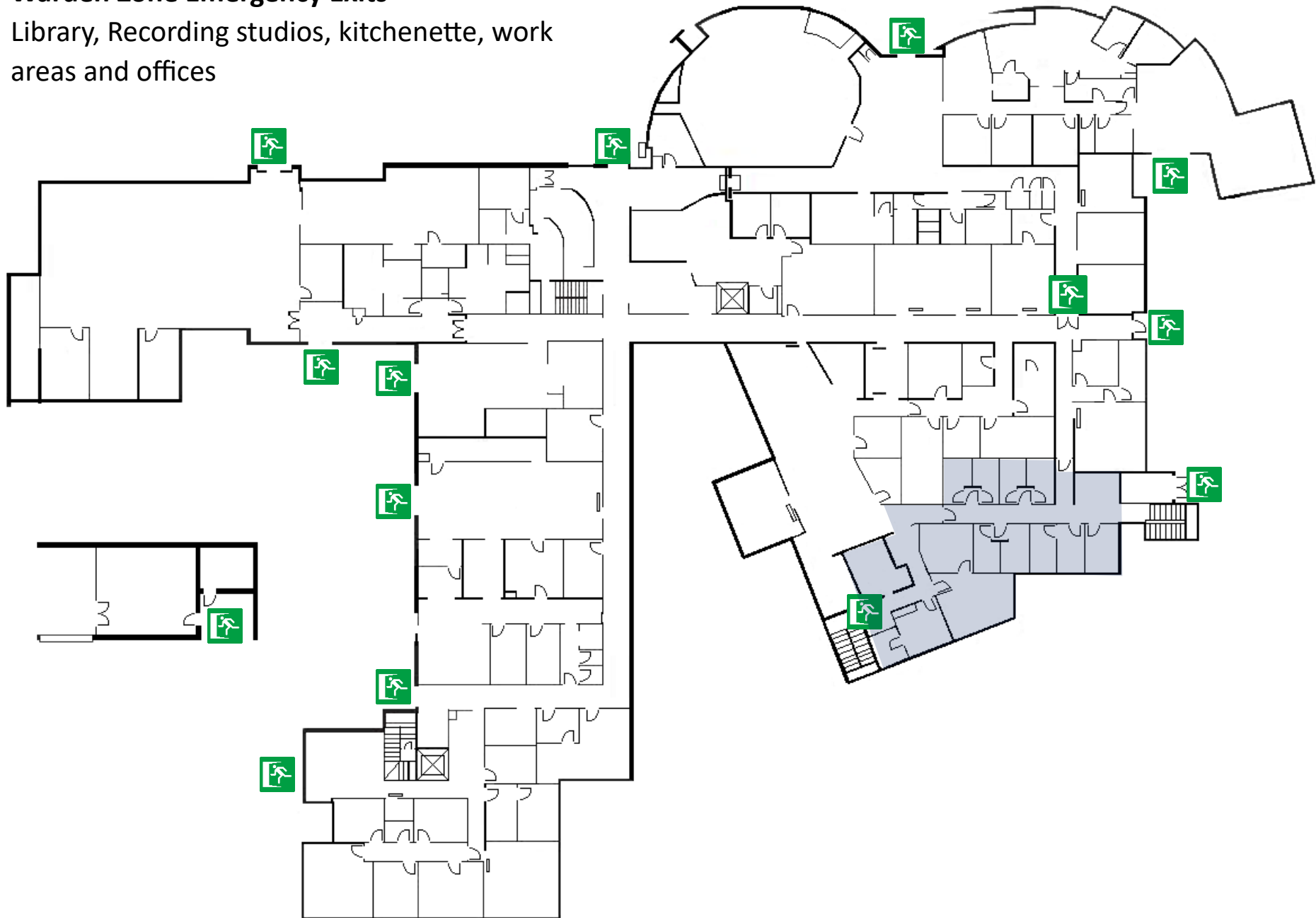
CET, HR/ OPTOM passage (including Meeting Room 2 & Assistive Tech passage rooms)



## PERRON PLACE: GROUND FLOOR

### Warden Zone Emergency Exits

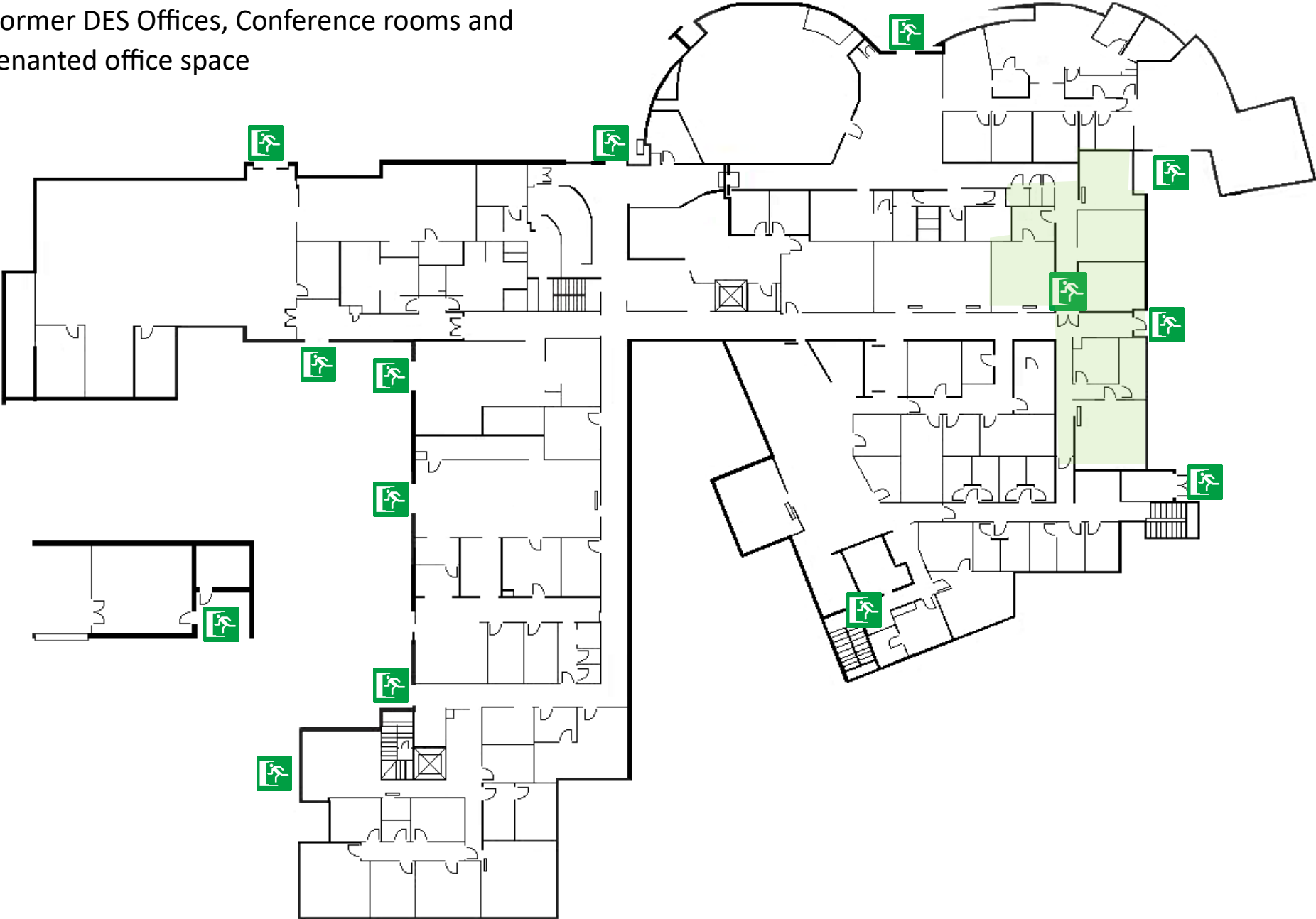
Library, Recording studios, kitchenette, work areas and offices

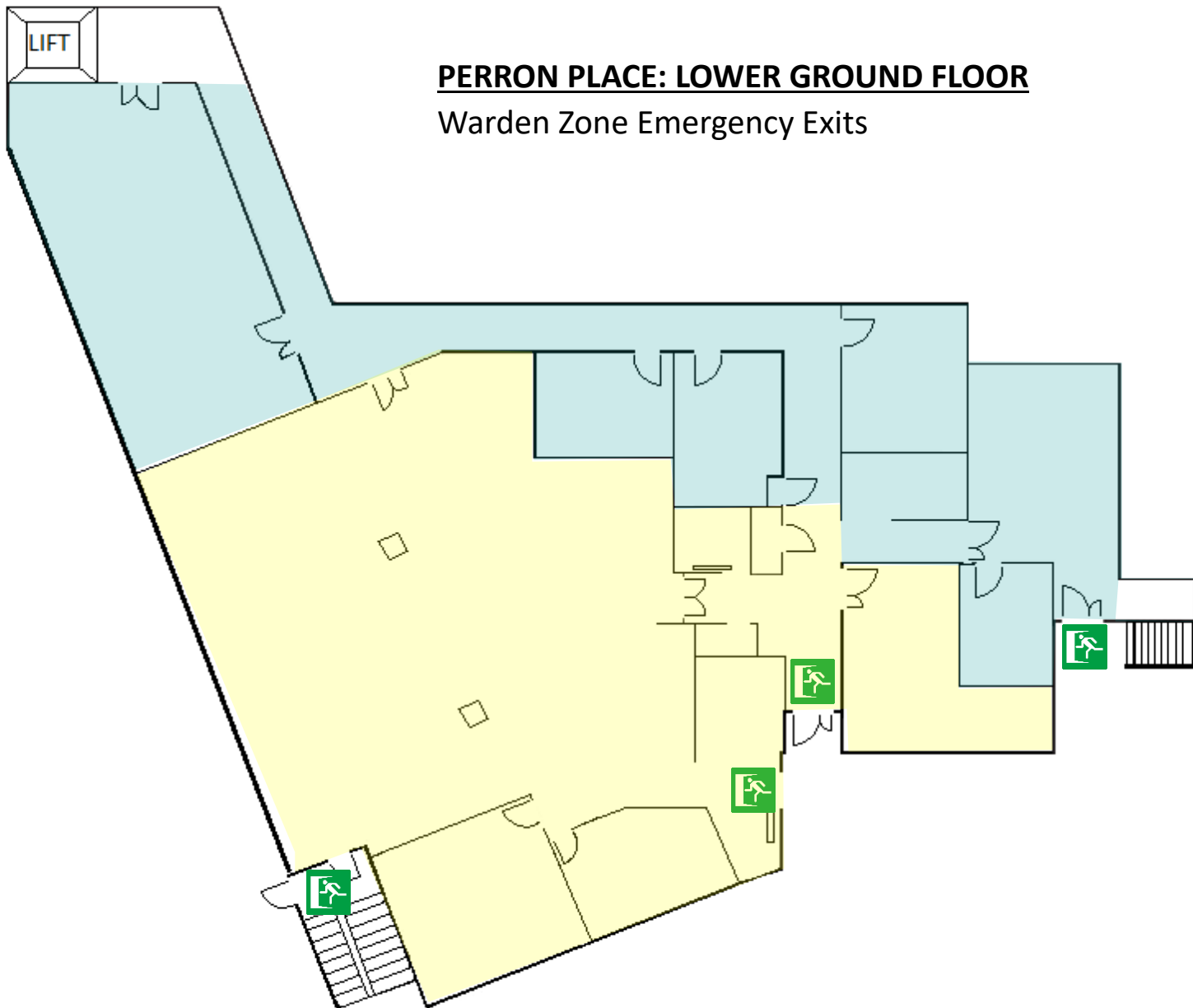


**PERRON PLACE: GROUND FLOOR**

**Warden Zone Emergency Exits**

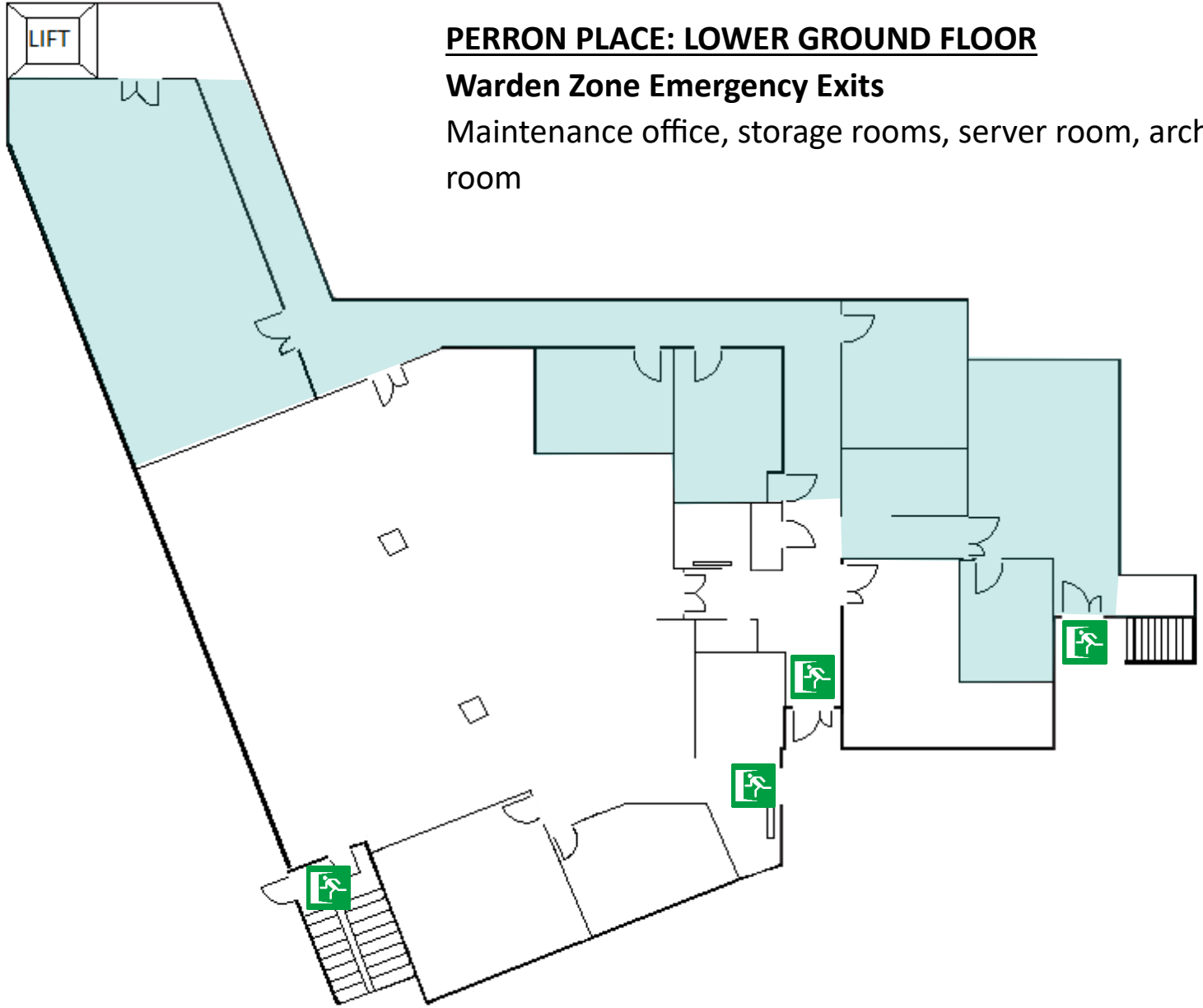
Former DES Offices, Conference rooms and tenanted office space





**PERRON PLACE: LOWER GROUND FLOOR**

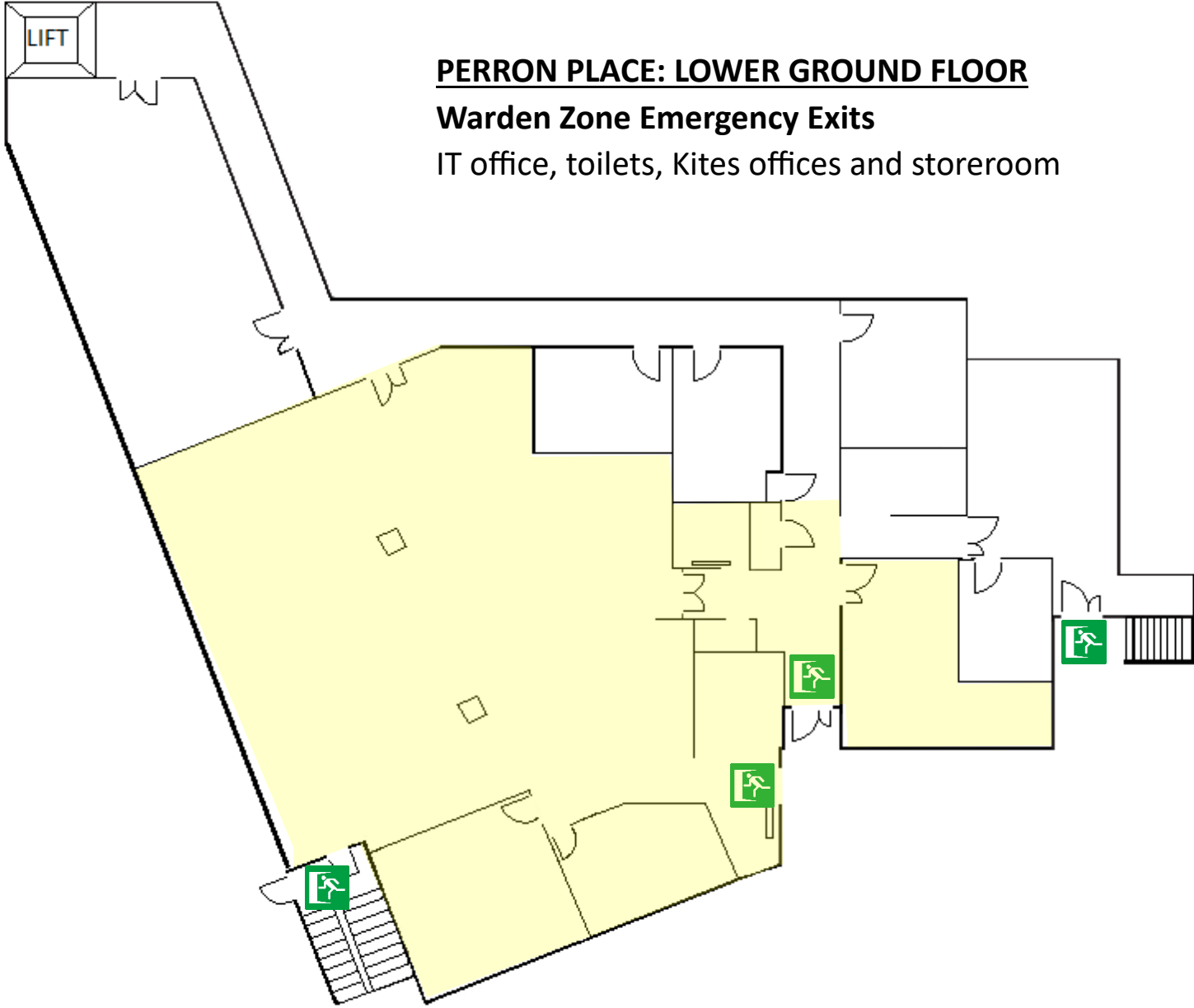
Warden Zone Emergency Exits



**PERRON PLACE: LOWER GROUND FLOOR**

**Warden Zone Emergency Exits**

Maintenance office, storage rooms, server room, archive room



**PERRON PLACE: LOWER GROUND FLOOR**

**Warden Zone Emergency Exits**

IT office, toilets, Kites offices and storeroom